



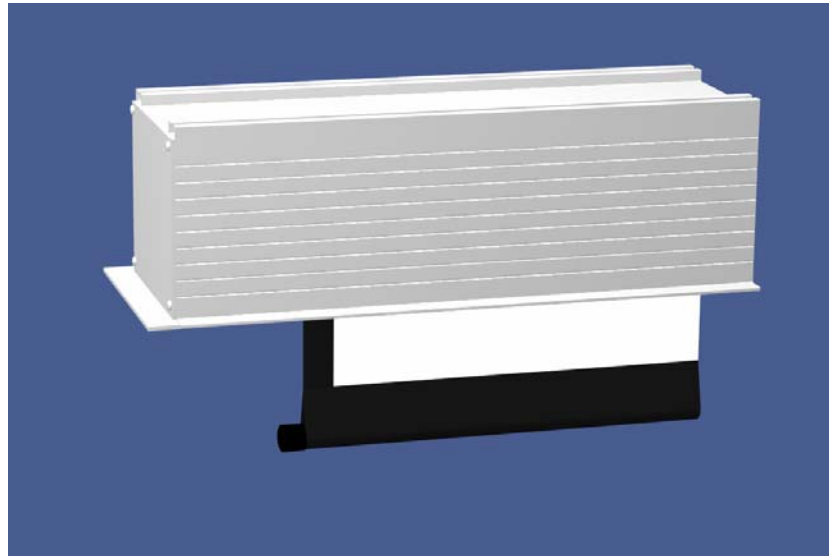
Manufacturers of Professional Audio-Visual Products

720 Middle Ground Blvd. Newport News, VA 23606
(757) 873-6602 – (800) 227-6602 – (757) 873-0212 FAX

"Alpine XL" Motorized Projection Screen

Product Description

The BEI Alpine XL is designed for displaying high resolution images, via front projection, produced by high output DLP, LCD & DLA video/data projectors. The Alpine XL is motorized and is designed for ceiling recess mounted installation.







Features & Benefits

- 5 year warranty.
- Built-in Low Voltage Control
- Viewing area up to 150" diagonal.
- Easily reverse-rolled in the field.
- Viewing surface is seamless.
- Viewing surface is matte white with a gain of 1.3.
- Viewing surface substrate is 100% opaque.
- Viewing surface is fire retardant.
- Black masking borders are standard.
- Housing is extruded aluminum and is suitable for air plenum installation.
- Housing has an integrated perimeter flange for ceiling tiles.
- Housing has a white textured finish.
- Light weight & easy to install.
- UL listed motor-in-roller.
- Control options include contact closure, RS232, IR remote and Ethernet.

For a Sales Representative in your area, or for more information, be sure to visit us on the web at:

www.beiautomation.com

Download Information Available:

-  Brochure
-  Installation Instructions
-  CSI Specifications
-  CAD Drawings

Mechanical Specifications

Projection Surface: Matte white vinyl coated polyester weave; fire retardency NFPA 701 small scale

Projection surface reflectivity: Gain of 1.3 measured on axis

Viewing Angle: 50 degrees

Projection surface rate of travel: 5 inches per second

Roller tube: Extruded aluminum, 6063 alloy, 3.25" diameter

Fabric weight: 24 ounces per square yard

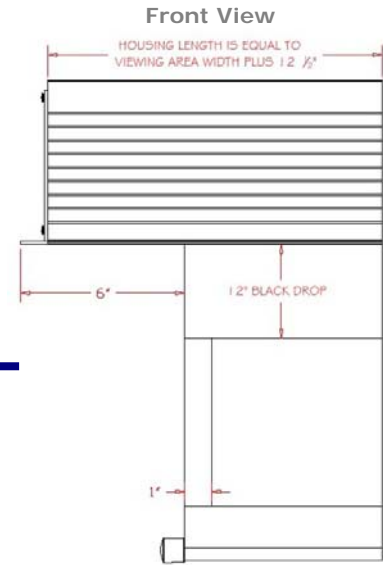
Housing construction: Extruded aluminum, 6063 alloy, air plenum rated

Housing finish: Electro-statically applied polyester

Housing service access: Removable bottom panel entire housing length, extruded aluminum, 6063 alloy

Housing size: Height = 6", Width = 7-1/4",

Length = Fabric width + 12-1/2 (14" flange to flange)



Electrical Specifications

Motor Type: Brushless asynchronous AC, instant reversing

Power requirement: 120 volt 60 hz 1 amp

Bearing type: Permanently lubricated bronze

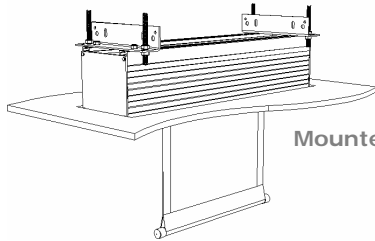
Gear reduction: Three stage planetary w/electromagnetic disc brake

Limit switches: Electronically set

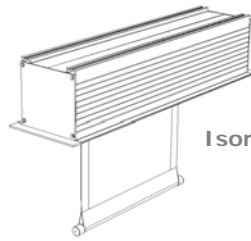
Rotational speed: 38 revolutions per minute

Nominal torque: 52 in - lbs

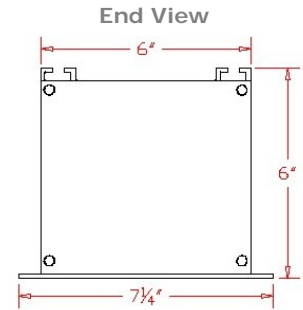
Approvals: UL and CSA



Mounted View



Isometric View



Alpine XL – Common Sizes

PART #	ASPECT RATIO	VIEWING AREA	DIAGONAL	SHIP WEIGHT
13.060.060	SQUARE (1:1)	60" w x 60" h	85"	63 lbs.
13.072.072	SQUARE (1:1)	72" w x 72" h	102"	72 lbs.
13.084.084	SQUARE (1:1)	84" w x 84" h	119"	81 lbs.
13.096.096	SQUARE (1:1)	96" w x 96" h	136"	90 lbs.
13.108.108	SQUARE (1:1)	108" w x 108" h	153"	99 lbs.
13.120.120	SQUARE (1:1)	120" w x 120" h	170"	108 lbs.
13.060.048	5:4 (1.25:1)	60" w x 48" h	77"	63 lbs.
13.068.054	5:4 (1.25:1)	68" w x 54" h	87"	72 lbs.
13.075.060	5:4 (1.25:1)	75" w x 60" h	96"	72 lbs.
13.083.066	5:4 (1.25:1)	83" w x 66" h	106"	81 lbs.
13.090.072	5:4 (1.25:1)	90" w x 72" h	115"	81 lbs.
13.098.078	5:4 (1.25:1)	98" w x 78" h	125"	90 lbs.
13.105.084	5:4 (1.25:1)	105" w x 84" h	134"	99 lbs.
13.113.090	5:4 (1.25:1)	113" w x 90" h	144"	99 lbs.
13.120.096	5:4 (1.25:4)	120" w x 96" h	154"	108 lbs.
13.064.048	4:3 (1.33:1)	64" w x 48" h	80"	63 lbs.
13.072.054	4:3 (1.33:1)	72" w x 54" h	90"	72 lbs.
13.080.060	4:3 (1.33:1)	80" w x 60" h	100"	81 lbs.
13.088.066	4:3 (1.33:1)	88" w x 66" h	110"	81 lbs.
13.096.072	4:3 (1.33:1)	96" w x 72" h	120"	90 lbs.
13.104.078	4:3 (1.33:1)	104" w x 78" h	130"	99 lbs.
13.112.084	4:3 (1.33:1)	112" w x 84" h	140"	99 lbs.
13.120.090	4:3 (1.33:1)	120" w x 90" h	150"	108 lbs.
13.086.048	16:9 (1.77:1)	86" w x 48" h	98"	81 lbs.
13.096.054	16:9 (1.77:1)	96" w x 54" h	110"	90 lbs.
13.107.060	16:9 (1.77:1)	107" w x 60" h	123"	99 lbs.
13.120.067	16:9 (1.77:1)	120" w x 67" h	137"	108 lbs.
09.123.000	EXTRA DROP	Per Square Foot		